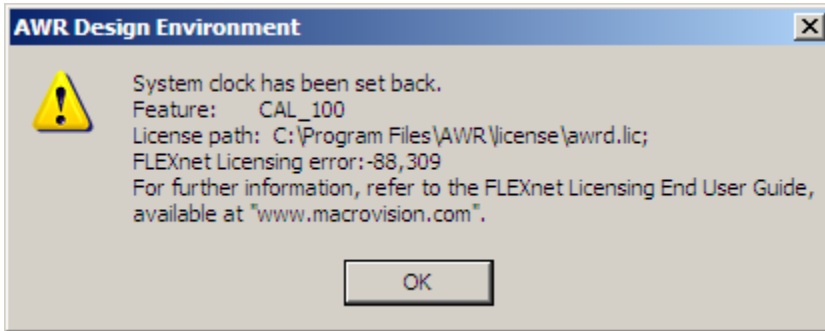


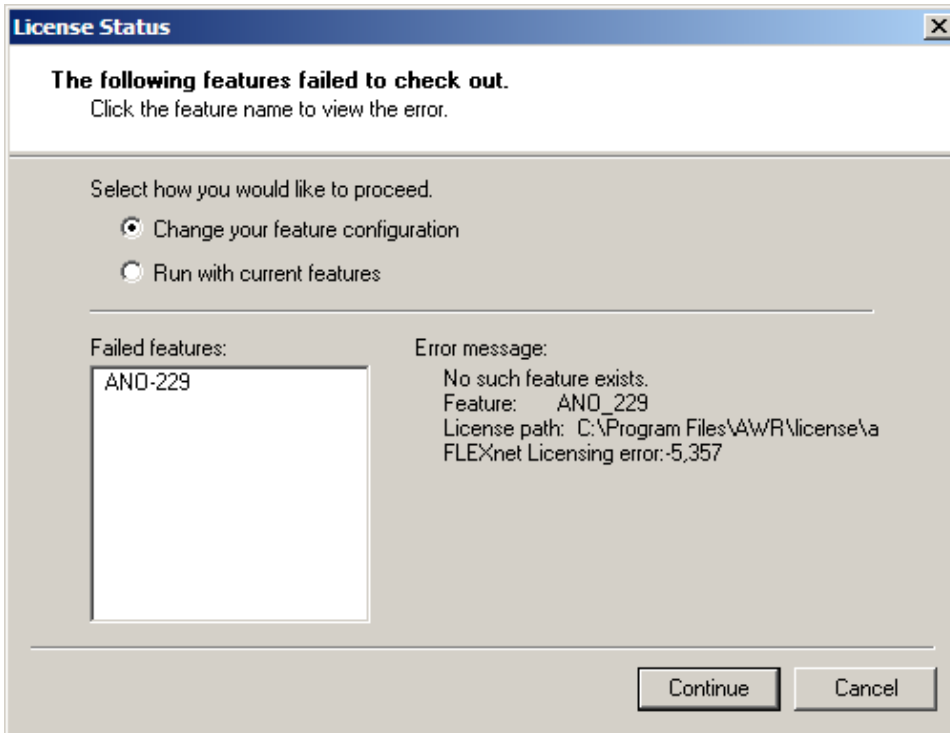
Error message upon starting software floating license

Find the error you are seeing and click on the picture for more information.

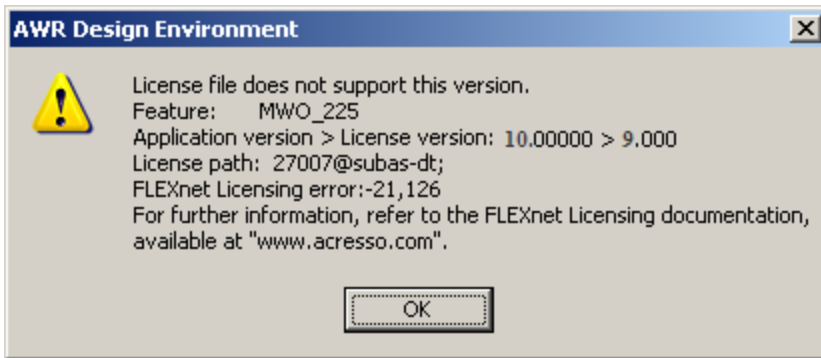
- **System clock has been set back**



- **No such feature exists**



- **License server machine is down or not responding - FLEXnet licensing error: -96,7**
- **License server machine is down or not responding - FLEXnet licensing error: -96,491**
- **License server machine is down or not responding - FLEXnet licensing error: -15,10**
- **License file does not support this version**



- **No License**

