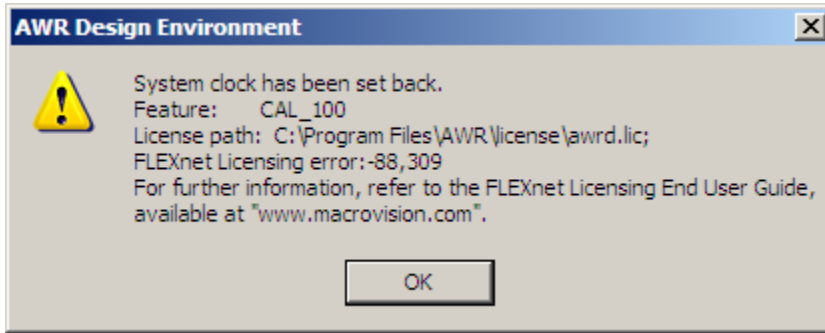


Your system clock has been set back



Windows uses the date/time setting to identify when files are created or modified.

When your system clock has been set back you need to correct it and perform a Search operation for all files with dates later than the current date. As an added precaution, you should also manually check the time of the files on your C:\ (or root) directory.

Sometimes this problem is caused by files on your computer being saved with a bad date (a date in the future) even if your system clock has not changed.

[Correct your Windows system clock](#)

[Perform a Search operation](#)