

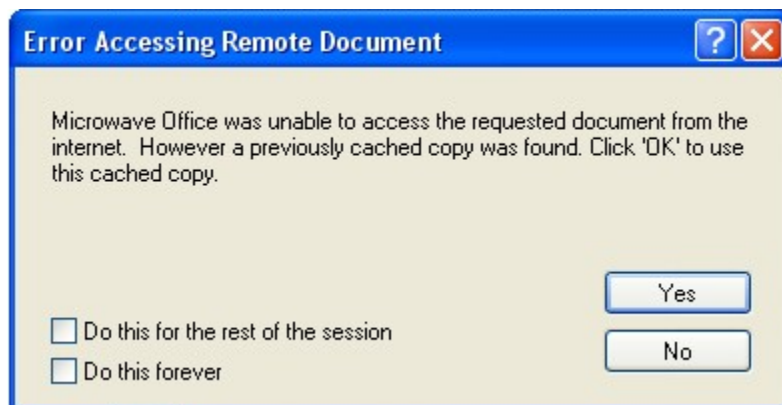
How Can I Avoid Error Accessing Remote Document Message

Problem

How Can I Avoid **Error Accessing Remote Document** Message?

Solution

When attempting to access web-based Libraries from within AWRDE, it is possible to get the following message:



If you encounter this message, check **Do this forever** box and click **No** so that you use the web-based version of the library and not a cached copy.