

# AWR KnowledgeBase



## Welcome AWR Design Environment Users

This space contains general information on using AWR products including Microwave Office, Visual System Simulator, AXIEM, Analyst, Analog Office and AntSyn.

## Search for Content

The blue title bar on the top of every page has a search field to search all of the AWR Knowledge Base. You may also search the AWRDE documentation itself by using the search box below.

Knowledgebase Search	AWRDE Documentation Search
	(Temporarily unavailable. Please select <b>Help &gt; Contents and Index</b> from the AWR Deisgn Environment program menu.)

## Featured Pages



### Improve your efficiency

[Customize your simulation environment](#) for improved workflow

- [Design Checker \(Help\)](#)
- [Getting Started With AWR Software \(Help\)](#)
- [Getting Started With Circuit Envelope \(Help\)](#)
- [Getting Started With Microwave Office \(Help\)](#)
- [The Use of Temperature in Simulations \(Help\)](#)

## Browse For Specific Content

(Click on the button for that specific content)

Licensing

Tip of the Day

Resource Library

Getting Started

Examples

Test Benches

V14 What's New

Design Flows

FAQs

Videos

Docs

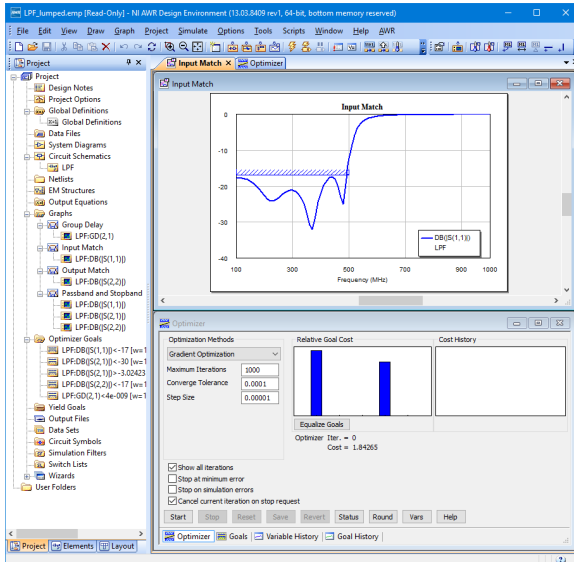
Scripting

Utilities

### Tip of the Day Home

You can edit Optimization and Yield Goals directly on a graph, even while analysis is running. The shipping example **LPF\_Lumped** is a great example to try this out.

With only one graph visible and optimizer open, the initial setup with show. Notice the optimizer goal is set at -17 dB on the **Input Match** graph



After the optimization is started (the **Start** button is pressed), see the goal being dragged down.

## Popular Topics

### A-B

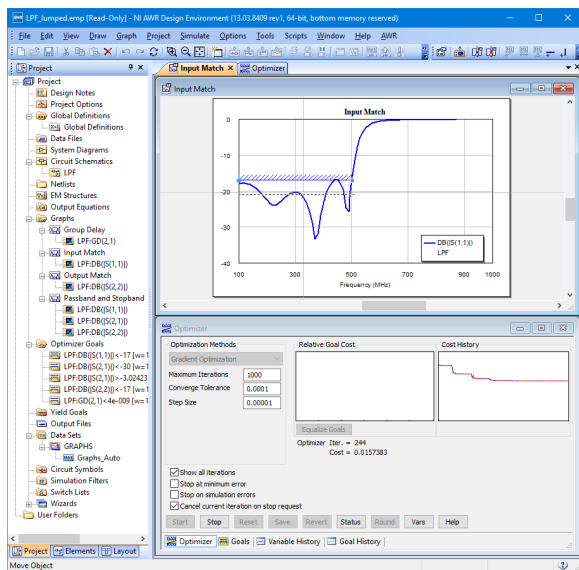
[active\\_content](#)  
[amp](#)  
[amplifiers](#)  
[analyst](#)  
[antenna](#)  
[antsyn](#)  
[aplac](#)  
[appnote](#)  
[axiem](#)

### C-D

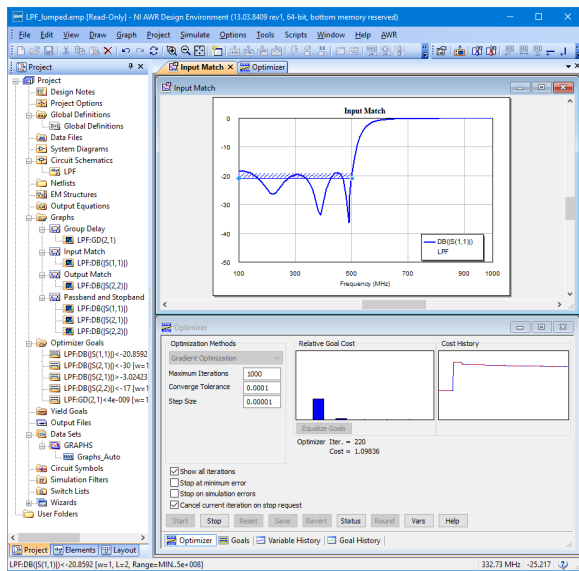
[cadence](#)  
[circuit\\_cosimulation](#)  
[circuit\\_envelope](#)  
[coplanar](#)  
[customization](#)  
[design\\_environment](#)  
[design\\_guides](#)  
[design\\_landing](#)  
[draft](#)  
[dxf](#)

### E-H

[e-learning](#)  
[em](#)  
[em\\_extraction](#)  
[emsight](#)  
[evaluator](#)  
[faq](#)  
[feature\\_help](#)  
[featured](#)  
[graphs](#)  
[guide](#)  
[hb](#)



When the mouse is released, the optimizer will use the new goal values and update the optimization costs.



Please see the [AWR Documentation](#) for more details.

## I-L

inets  
install  
layout  
library  
linear  
load\_pull  
lpf

## M-O

markers  
measurements  
mixer  
mixers  
models  
multi-technology  
multiple\_pdk  
new\_user  
noise\_figure  
oscillators

## P-R

pa  
passivity  
pcb  
pdk  
phase  
product  
product\_marketing  
productivity  
remote

## S-T

schematic\_connectivity  
scripts  
shape\_modifiers  
simulation  
stability  
stackup  
support  
switch\_views  
temperature  
testbench  
tutorial

## U-Z

utility  
v13  
v14  
video  
vss  
vss\_tips  
webinar  
yield\_analysis

## 0-9

3d\_parts