

# Enable or Disable EM Extraction - iNets only

## To run this script

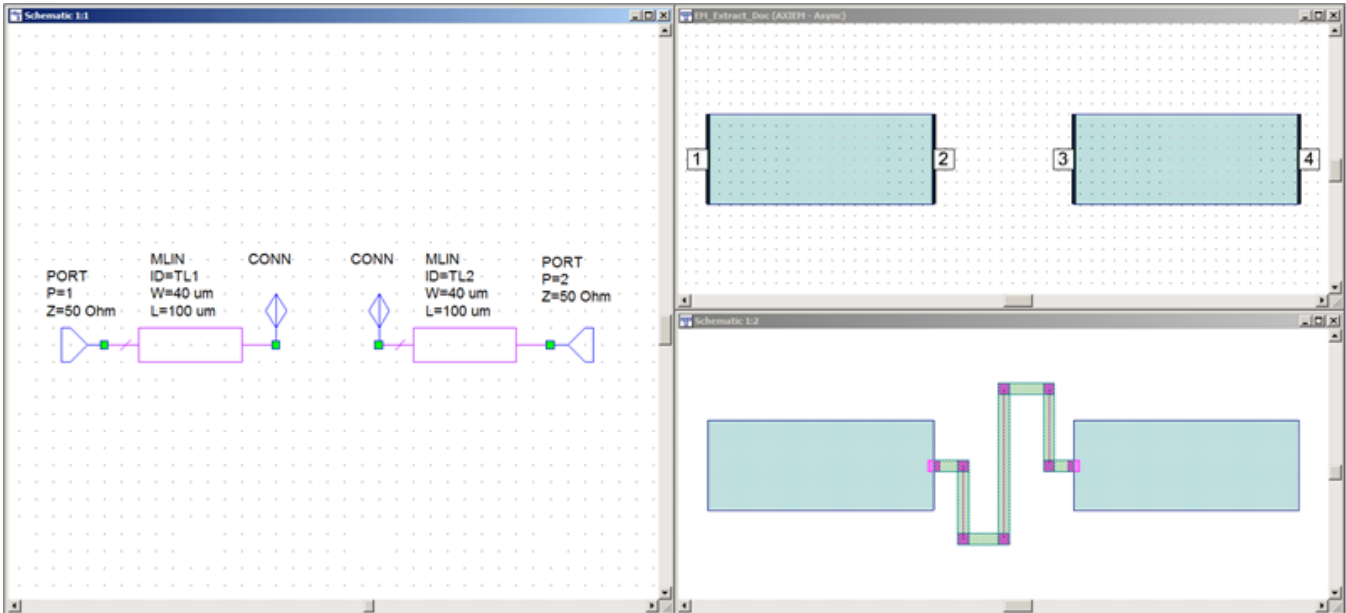
Select **Scripts > EM > Set\_iNet\_Extraction** from the Menus.

Or, in versions that support the script, you can run the utility directly from this page using this button.

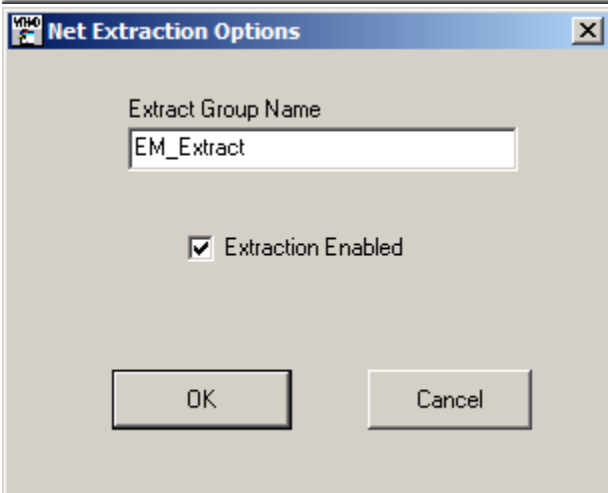
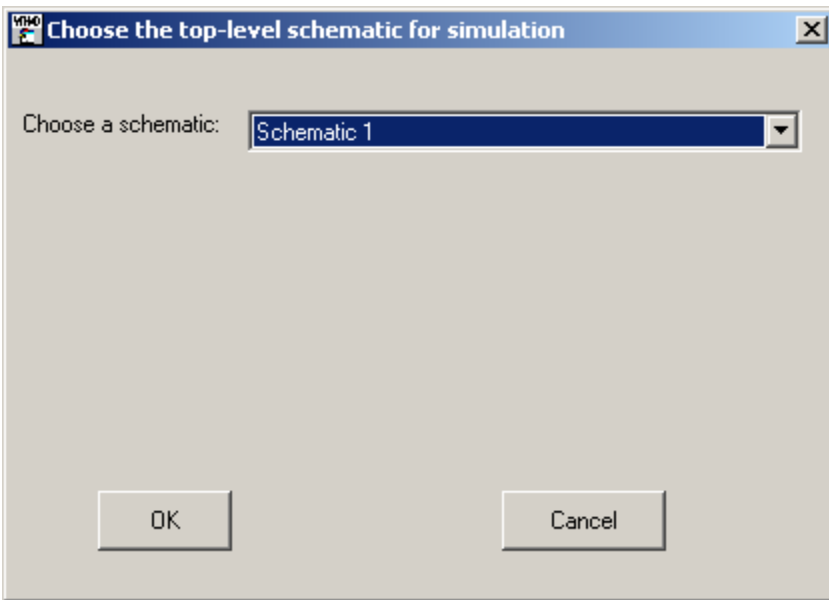
## Description

This utility can enable or disable EM extraction for iNets starting from a top level schematic chosen by the user, down through its hierarchy. After running the utility, the user will pick the schematic and will pick the name for Extract Group and if the iNets should be enabled or not for extraction. **Note** : Turn the Extraction Enabled setting off to disable the iNets from extraction.

The following simple example has been set up to illustrate the use of this utility. The image below shows a schematic of two MLIN elements that are connected with a named connector element (NCONN). The MLIN's are being extracted to the EM\_Extract group which you can see in the EM\_Extract\_Doc in the upper right picture. An iNet path is drawn, arbitrarily, to connect the two MLIN's. Notice that the iNet is in the layout, but not in the EM\_Extract\_Doc.



Now we run the Set\_iNet\_Extraction utility to enable extraction for the iNets's in Schematic 1.



As you can see in the picture below, the iNet connecting the two MLIN elements is now being extracted for simulation in the EM\_Extract\_Doc.

