

Fix Ambiguous Model blocks

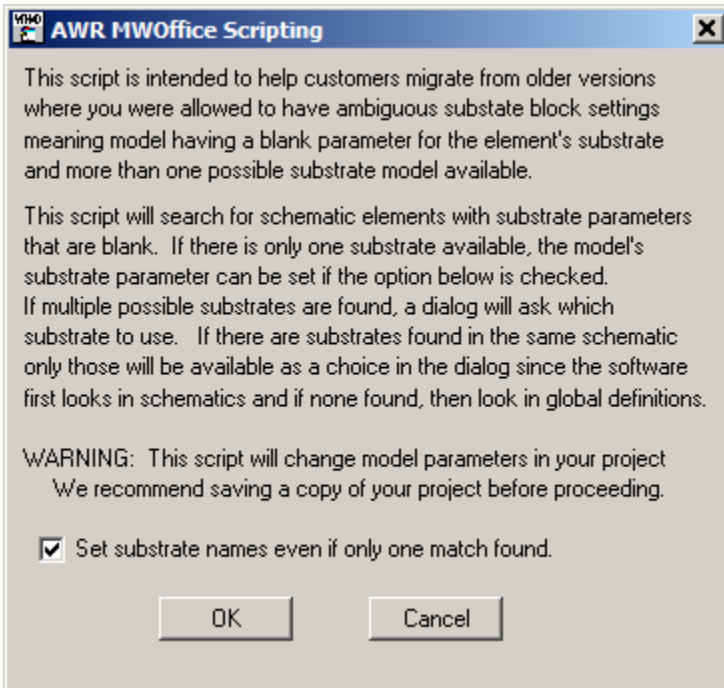
To run this script

Select **Scripts > Configuration > Fix_Ambiguous_Model_Blocks** from the Menu.

Or, in versions that support the script, you can run the utility directly from this page using this button.

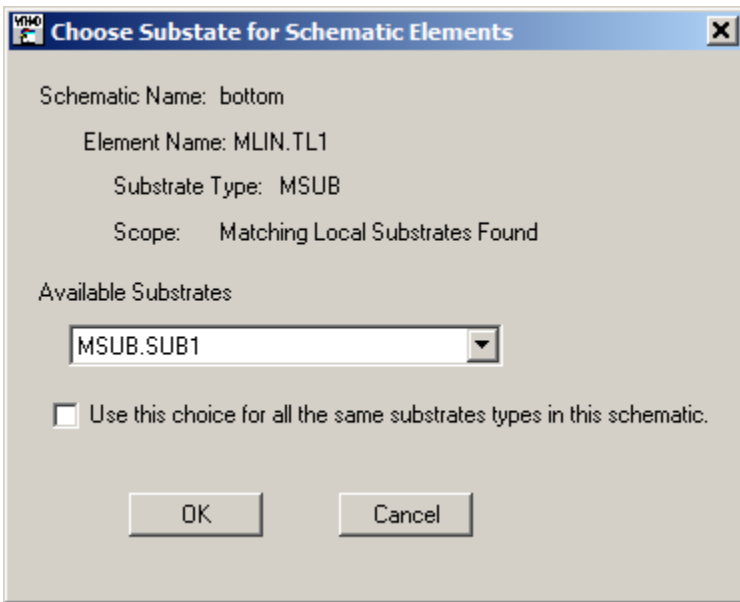
Description

This script was developed to help customers migration from older version to AWR Version 10. If you have a model that uses a model block (like a microstrip line that needs a MSUB block), and there are more than one possible matches, this results in a simulation error. When you run this script, you will see the dialog below.



Notice the option to set all substrates explicitly even if there is no ambiguity.

When ever an ambiguity is found, a new dialog will open asking you what you would like to do. If the matching substrate is in the same schematic the dialog will look like below. You have the option to apply the same setting to any other models with the same substrate type in the same schematic.



If the matching substrate is in global definitions the dialog will look like below. You have various options on how to apply the same setting to any other models found.

