

Generate STACKUP from an MSUB or SSUB block

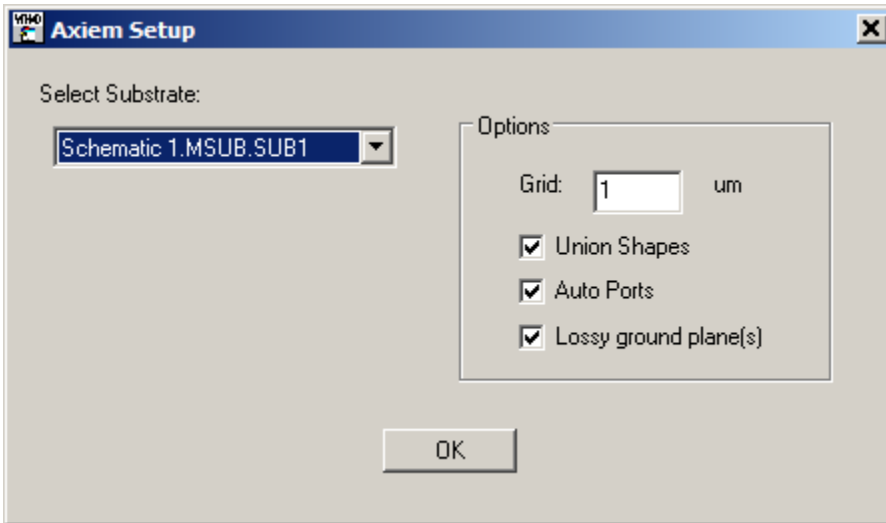
To run this script

Select **Scripts > EM > Create_Stackup** from the Menus.

Or, in versions that support the script, you can run the utility directly from this page using this button.

Description

This utility creates a STACKUP block from an MSUB or SSUB block. A STACKUP block is needed for extraction and this utility helps by configuring the STACKUP to have the same dielectric and material properties as the substrate definition. The MSUB and SSUB can be local or global. A schematic must be the active window when the script is run to see the dialog below.



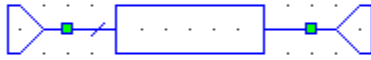
The settings are:

- Select Substrate: Schematics can have multiple possible substrates, you must select the one you want.
- Grid: Setting for approximate mesh size.
- Union Shapes: Should shapes be unioned together when creating the extraction EM document?
- Auto Ports: Should AXIEM use Auto Ports? This rarely will be turned off.
- Lossy ground plane(s): Should the ground plane use the same conductivity as the substrate or use a perfect conductor?

Below is a sample schematic before the script is run.

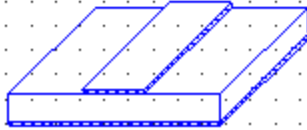
```
MLIN
ID=TL1
W=40 um
L=100 um

PORT
P=1
Z=50 Ohm
```



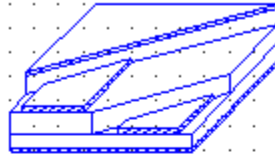
```
PORT
P=2
Z=50 Ohm
```

```
MSUB
Er=12.9
H=100 um
T=2 um
Rho=1
Tand=0
ErNem=12.9
Name=SUB1
```



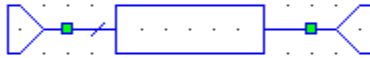
Below is same schematic after the script is run.

STACKUP
Name=SUB2



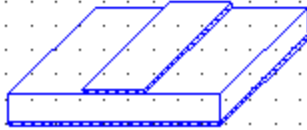
PORT
P=1
Z=50 Ohm

MLIN
ID=TL1
W=40 um
L=100 um



PORT
P=2
Z=50 Ohm

MSUB
Er=12.9
H=100 um
T=2 um
Rho=1
Tand=0
ErNem=12.9
Name=SUB1



EXTRACT
ID=EX1
EM_Doc="EM_Extract_Dec"
Name="EM_Extract"
Simulator=AXIEM
X_Cell_Size=1 um
Y_Cell_Size=1 um
STACKUP=""
Override_Options=Yes
Hierarchy=Off

