

Importing S-Parameter Data

To run this script

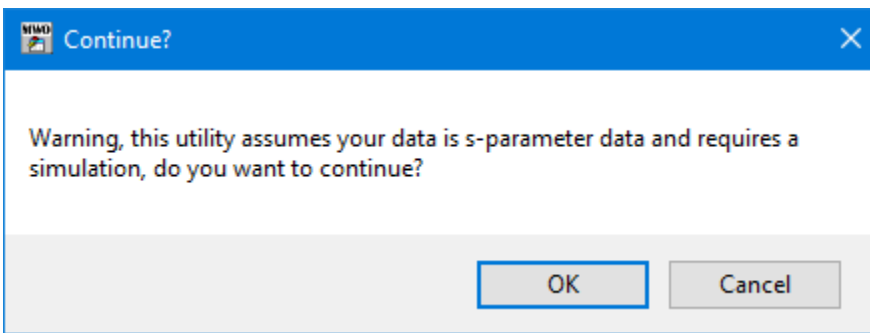
Select **Scripts > Data > Import_Data** from the Menu.

Or, in versions that support the script, you can run the utility directly from this page using this button.

Description

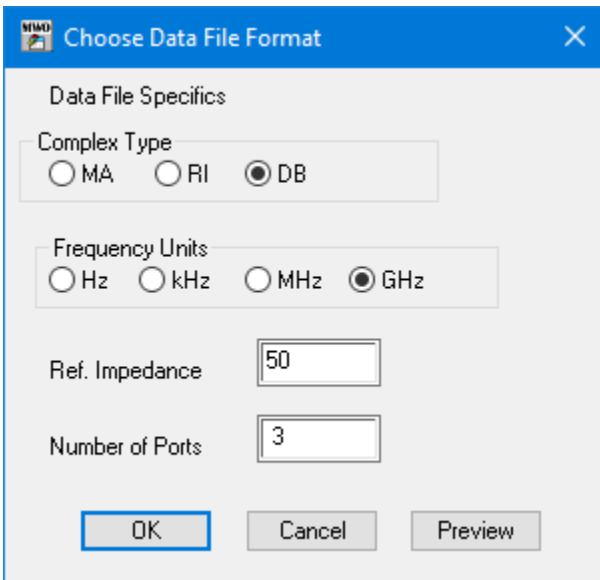
Sometimes, s-parameter data files that claim to be in Touchstone format do not adhere to the specific format rules. Common problems include: no touchstone control lines in the file, or incorrect line wrapping. A typical case is a 3 port data file where a frequency and one full complex matrix (19 numbers) is on each line in the file. This is not strict Touchstone format; so importing such files as Touchstone will generate error messages, and simulations involving them will fail. This script helps by reformatting such files first, and then importing them.

When the script is first run, a dialog explains that only sparameter data is supported and that a simulation must happen to use this script.



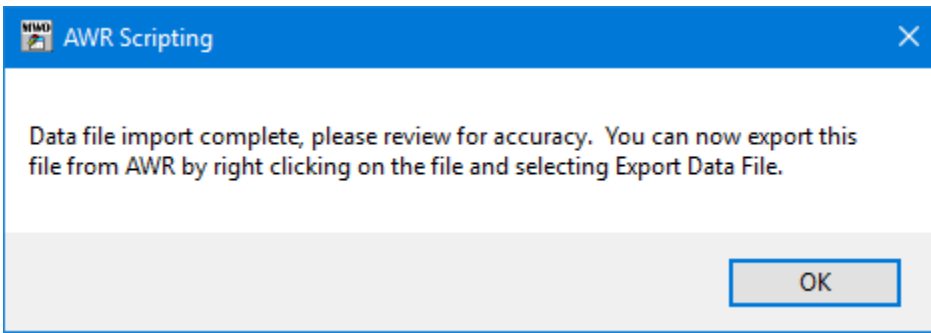
If you do not want the script to simulate your project, you should run this script from a new project and then import the data file into your current project.

You will then be prompted to select the file you would like to import. After you select the file, a new dialog will come up to help you select the formatting details of the file.



As much of the information as possible is determined from any control line in the file. There is a **Preview** button that will open up the file in the AWR Design Environment, so you can inspect it for information (e.g. there are often comment lines at the top).

A final dialog explains that the script is done and explains how to export the data file in case you want to import it into other projects.



If this script can not fix the problems with your data file, please try the [Touchstone Data File Repair Utility](#). The utility is a program that you will need to download and run. Your company may have strict rules that will not allow this.