

Find Minimum and Maximum in Measurement

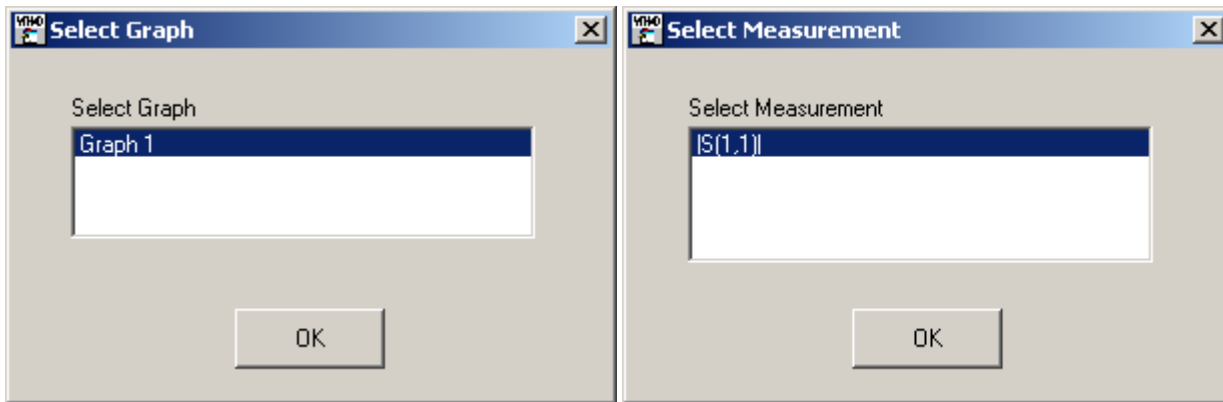
To run this script

Select **Scripts > Graphs > Measurement_Min_Max** from the Menu.

Or, in versions that support the script, you can run the utility directly from this page using this button.

Description

This script will display the minimum and maximum of a measurement and the frequency at which they occur. The user will pick the graph and the measurement for which to find the minimum and maximum.



And the result will show in a dialog box.

