

Duplicate Graph

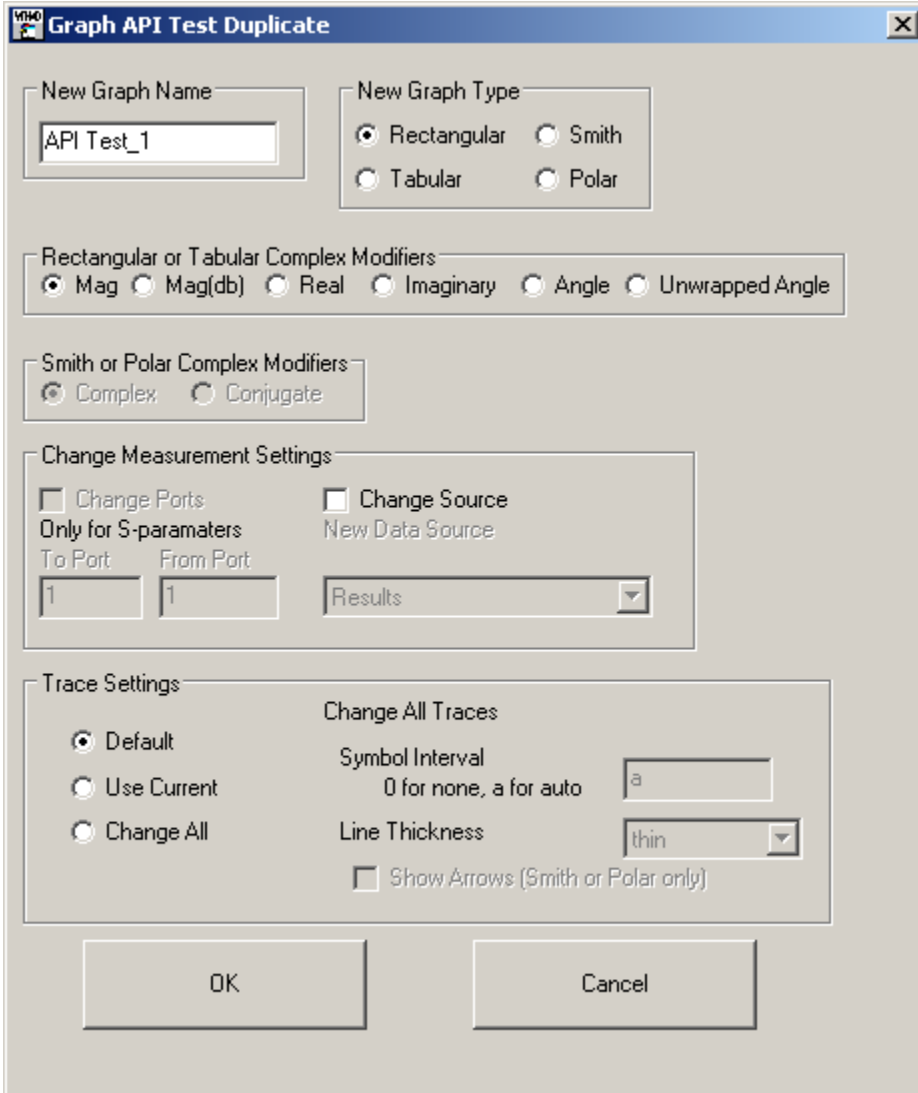
To run this script

Select **Scripts > Graphs > Graph_Duplicate** from the Menus.

Or, in versions that support the script, you can run the utility directly from this page using this button.

Description

This script will make a duplicate of a graph. Make the graph you want to duplicate the active window and run the script as shown below.



The dialog has the following groups of controls:

- New Graph Name: Enter new graph name. It will default to a reasonable value.
- New Graph Type: Select the destination graph type.
- Rectangular or Tabular Complex Modifiers: If you destination graph is one of these types, you can change the complex modifier for the measurements on the new graph. These options will disable if the destination graph is not one of these.
- Smith or Polar Complex Modifiers: If you destination graph is one of these types, you can change the complex modifier for the measurements on the new graphs. These options will disable if the destination graph is not one of these.
- Change Measurement Settings: This section is typically done for s-parameter type measurements where you can change the port combinations for all the measurements on the graph. This might be useful if measuring $S(1,1)$ from many sources and want to duplicate to $S(2,1)$. However for measurement type, you can change to use any different data source. If that source doesn't support the measurement, you will get an error when simulating next.

- Trace Settings: Change how the traces are displayed for each measurement on the new graph. You can either use the current settings, go back to default settings or change the settings. If Change All is selected, the options the right are enabled to change how the traces display.