

Display Element Count in Schematic and Outputs It in Excel Sheet

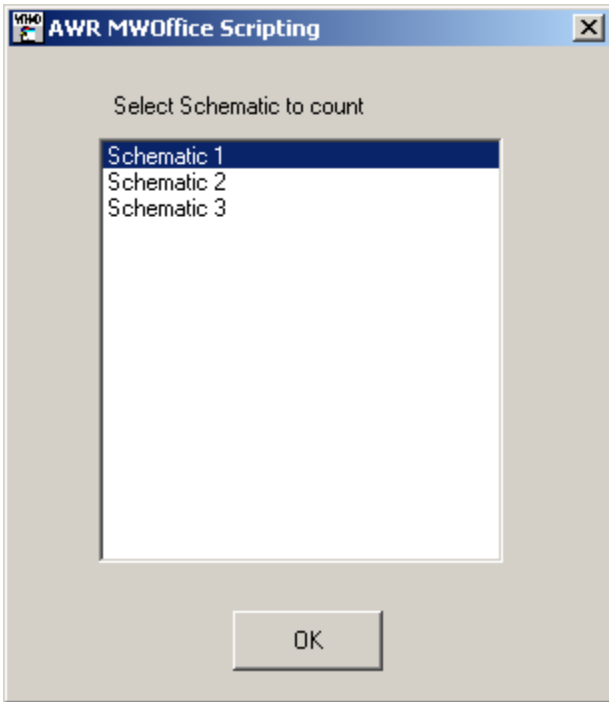
To run this script

Select **Scripts > Schematic > Count_Schematic_Elements** from the Menus.

Or, in versions that support the script, you can run the utility directly from this page using this button.

Description

This utility will count the enabled elements in the schematic picked by user and it outputs the result in debug window as well as in an Excel sheet. When you run the utility, it prompts a dialog box to select the schematic



After selecting the schematic, it will output the number of elements in debug window and Excel sheet.

```
Schematic 1  
RES 1  
GND 1  
IND 1  
M_PROBE 1  
SUBCKT 1  
PORT 1
```

	A	B	C
1	Quantity	Model	
2	2	RES	
3	1	GND	
4	1	IND	
5	1	M_PROBE	
6	1	SUBCKT	
7	1	PORT	
8			
9			
10			
11			