

# Convert Simulated IV Data into an IVD File

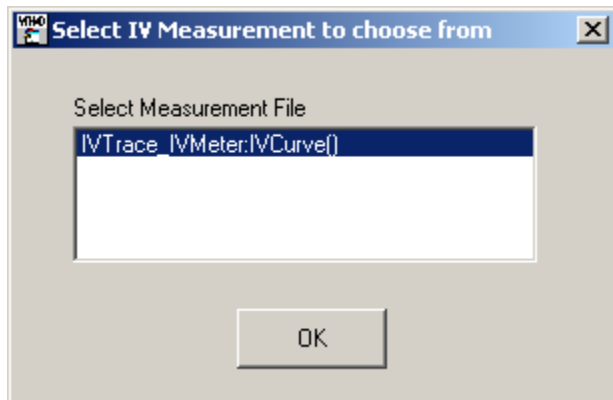
## To run this script

Select **Scripts > Data > Generate\_IVD** from the Menu.

Or, in versions that support the script, you can run the utility directly from this page using this button.

## Description

The AWRDE does not currently have an output file type for IV curve data. This script will convert simulated IV data (i.e. an IVCurve measurement) into an IV curve data file (IVD format), and load that file into the project. The file can then be plotted with another IVCurve measurement as reference for visual comparison, or used in an IVDelta measurement to determine the difference/error between it and a measurement. After you run the script you will pick which IVCurve measurement on a graph that you want to convert:



And it will create an IVD data file and load the data into the project with the name "IVD\_Data" as shown below.

AWR Simulation\_To\_IVD\_Data.emp - AWR Design Environment (8.0.4215)

File Edit Project Simulate Options Tools Scripts Window Help AWR

Project IVD\_DATA

Design Notes  
Project Options  
Global Definitions  
Data Files  
IVD\_DATA  
System Diagrams  
Annotations  
Circuit Schematics  
Annotations  
IVTrace\_IVMeter  
IVTrace\_SW\_var  
EM Structures  
Annotations  
Output Equations  
Graphs  
Beta  
IV Curves Sw Var  
IV Curves\_IVMeter  
Optimizer Goals  
Yield Goals  
Output Files  
Wizards

IVD\_DATA

17							
6							
0	0.002	0.004	0.006	0.008	0.01		
0	0.0000e+00	-2.1394e-03	-4.3054e-03	-6.4223e-03	-8		
0.5	5.0017e-11	2.8147e-02	3.2466e-02	3.4123e-02	3.4		
1	1.0003e-10	8.1596e-02	9.0598e-02	9.3628e-02	9.498		
1.5	1.5005e-10	1.2199e-01	1.4959e-01	1.5507e-01	1.5		
2	2.0007e-10	1.2662e-01	2.0197e-01	2.1576e-01	2.198		
2.5	2.5008e-10	1.2671e-01	2.2011e-01	2.7130e-01	2.8		
3	3.0010e-10	1.2678e-01	2.2049e-01	2.9756e-01	3.375		
3.5	3.5012e-10	1.2684e-01	2.2060e-01	2.9843e-01	3.6		
4	4.0013e-10	1.2690e-01	2.2071e-01	2.9858e-01	3.665		
4.5	4.5015e-10	1.2697e-01	2.2082e-01	2.9873e-01	3.6		
5	5.0017e-10	1.2703e-01	2.2093e-01	2.9888e-01	3.669		
5.5	5.5018e-10	1.2709e-01	2.2104e-01	2.9903e-01	3.6		
6	6.0020e-10	1.2716e-01	2.2115e-01	2.9918e-01	3.673		
6.5	6.5022e-10	1.2722e-01	2.2127e-01	2.9933e-01	3.6		
7	7.0023e-10	1.2728e-01	2.2138e-01	2.9948e-01	3.676		
7.5	7.5025e-10	1.2735e-01	2.2149e-01	2.9963e-01	3.6		
8	8.0027e-10	1.2741e-01	2.2160e-01	2.9977e-01	3.680		

Project Elements Layout

Status Window

Ln 14 Col 22