

# Citi To Touchstone

## To run this script

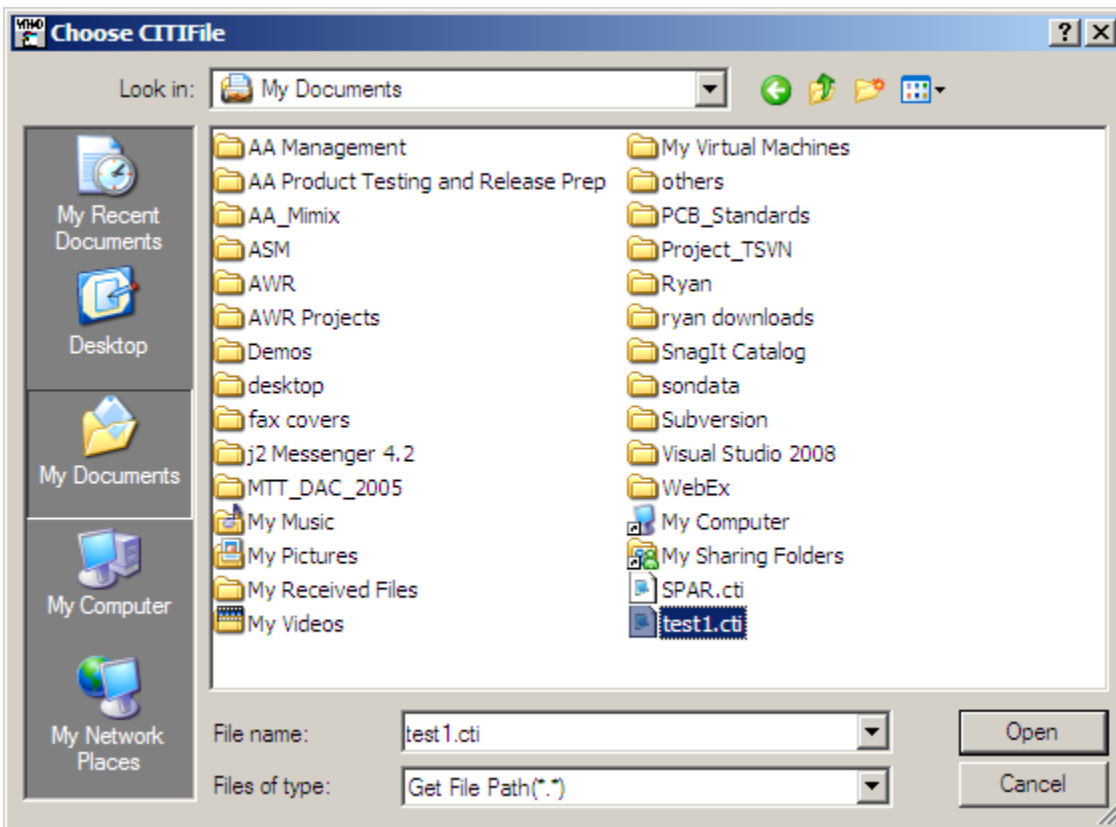
Select **Scripts > Data > Citi\_to\_Touchstone** from the Menus.

Or, in versions that support the script, you can run the utility directly from this page using this button.

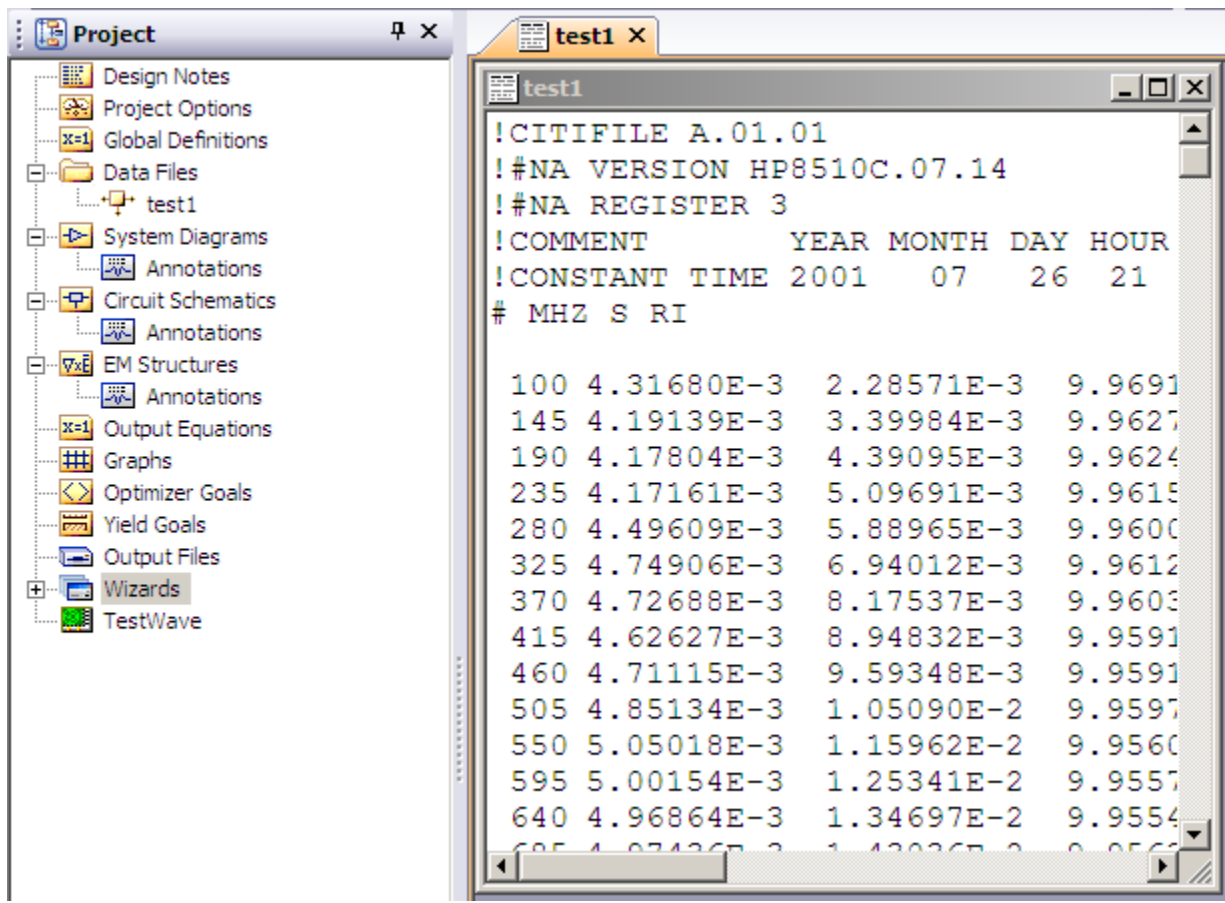
## Description

This script asks the user to locate a n-port citi file. It then converts the citi file to touchstone format and loads it as a data file into the AWRDE. It currently supports up to 4-port citi files. This script does not yet support any sort of variable sweeps in the citi file.

When you run the script, you will get the dialog below asking you to locate the citi file.



After you select the file to import, the same named file will be loaded under the **Data Files** node.



The data will now be in touchstone format, ready to be used in your design. You can also right mouse click on the file and select **Export Data File ...** if you want the data in touchstone format in a file on your computer.