

Print All Parameters of the Element to a Text File

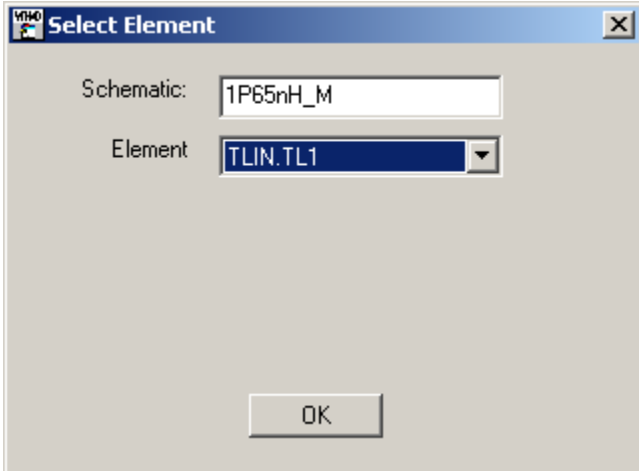
To run this script

Select **Scripts > Models > Parameter_Printer** from the Menus.

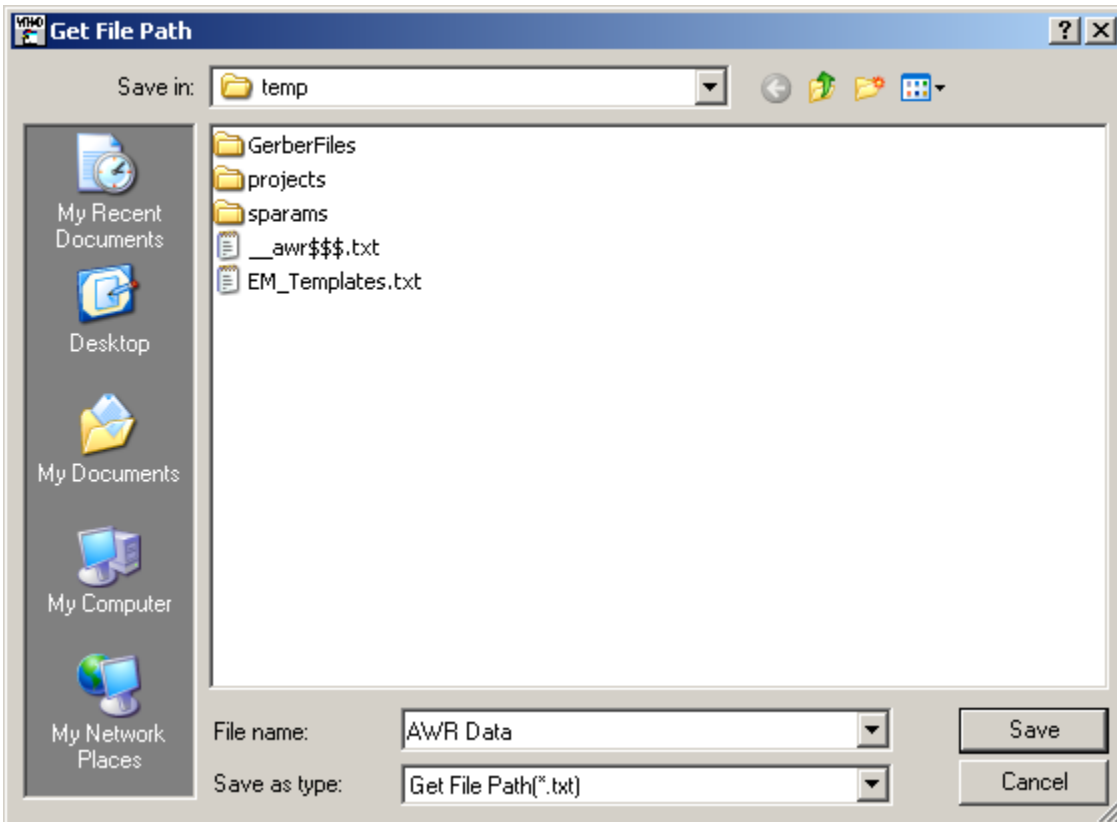
Or, in versions that support the script, you can run the utility directly from this page using this button.

Description

This script prints all parameters of the element chosen to a text file. It will ask the user to pick the schematic and the element.



The user is then prompted to select a file location.



All of the model parameters are then written to that file.

The image shows a standard Windows Notepad application window. The title bar reads "AWR Data.txt - Notepad". The menu bar includes "File", "Edit", "Format", "View", and "Help". The text area contains the following text:

```
ID TL1
Z0 104.8 ohm
EL 30.47 Deg
F0 5.031 GHZ
```