

Match Project Frequency to Data File Frequency

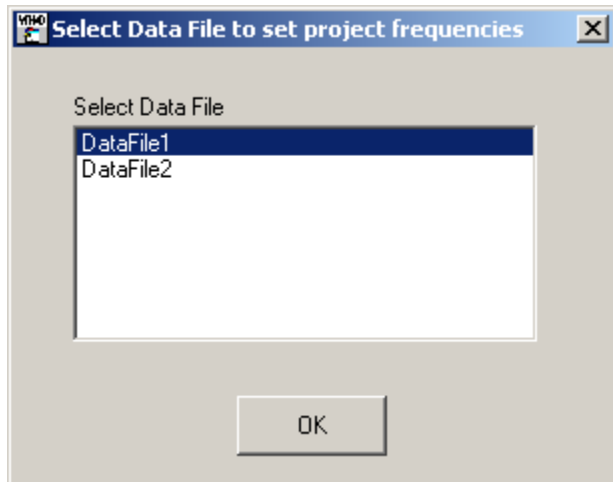
To run this script

Select **Scripts > Simulation> Match_Proj_Freq_to_Datafile_Freq** from the Menus.

Or, in versions that support the script, you can run the utility directly from this page using this button.

Description

This utility will prompt the user to select a touchstone data file that is loaded in the project.



Then it will set the project frequencies to the selected touchstone file frequencies.