

Getting Started with the AWR Software

Here at AWR, we are happy you are interested in getting started with our software. If you are a relatively new RF/Microwave engineer, we are glad you found us now in your career. You have made the right choice and we are excited to have you using our software. If you are used to using another design system, we are glad you are looking at the AWR Design Environment (AWRDE) and look forward to the opportunity to prove that you will spend more time doing engineering work and less time managing your design.

Get Your Evaluation License

Our goal is to make it easy for you get up and running with an evaluation of our software.

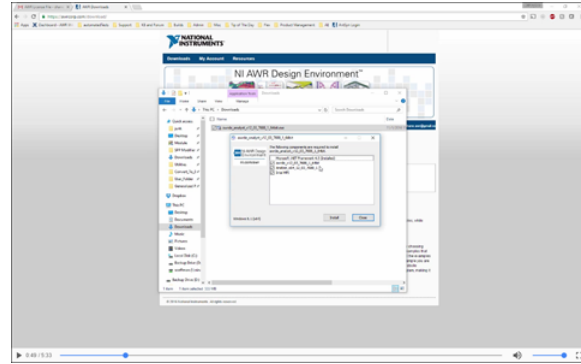
Start here: <http://www.awrcorp.com/download-awr-design-environment>

You will be required to register with your company information and the HOSTID of the computer for your evaluation. We will grant you a 7 day license to get you started. To get an extended evaluation, our sales team will need to review and approve an extended evaluation. Extended evaluations could be delayed if the information used to register does not appear to be accurate. If you work for a well known company and use a generic email domain, this will delay your extended approval. We don't want to be difficult, we want to make sure people registering are legitimate potential customers.

University Students: You won't typically use the evaluation process listed here. Please see our [University Program Overview](#) page.

Install the Software

Installation is extremely easy for the AWR Design Environment. Here is a video to prove it.



Useful links for when you are ready to install.

- [Download login](#) - after you have your evaluation license.
- [Using awrd.awrlc License File Types](#)
- [Licensing Home](#)

Print the Quick Reference Guide

Quick Reference

AWR Design Environment QUICK REFERENCE

You can access this file (*Quick_Reference.pdf*) in the AWR Design Environment suite by choosing **Help > Quick Reference**.

This menu command opens any document named *Quick_Reference.pdf* in the AWR Design Environment installation folder.

AWR provides a Quick Reference Guide. This is a condensed document of tips and tricks on how to accomplish many tasks. This has been developed over years of supporting our customers. Every engineer using the AWR Design Environment should have a printed version of this guide on their desk.

Please use **Help > Quick Reference** from the AWRDE to open a printable version of this guide or click on the image above to download a copy. You can also contact AWR support ([Getting AWR Technical Support](#)) to get copies of this guide free of charge. If you request one, make sure to request for each designer in your group, they will thank you for thinking of them. Your boss will thank you for finding ways for AWRDE users to be more efficient.

Use the Getting Started Guide

If you want to quickly understand the basics of how the AWR Design Environment works, please see the guide listed below. You will need to have V13 or later of the software open before going through this quick overview of setting up a simple simulation.

Getting Started With Microwave Office

We have several getting started guides to help you get going with the software. From the software, you can select **Help > Getting Started**. Alternately, if you have V13 open click on a link below to go to specific getting started topics

- [Introduction](#)
- [Microwave Office](#)
- [Analyst](#)
- [MMIC Design](#)
- [Visual System Simulator](#)

If you prefer a printed version of this guide, please contact your sales representative. This information is included in your evaluation license email or can be found here: <http://www.awrcorp.com/company/contact-us/find-sales-rep>

You can also find printable versions of these guides on our [Documentation](#) page.

Learn More with E-Learning

After you have finished your relevant getting started guide, you might find you are interested in a deeper understanding of certain areas of our software. Since you have already registered for an evaluation license, you can use your login to access many self-paced learning videos, here: [E-Learning Videos](#)

E-Learning Training Videos

Self-paced E-Learning Training Videos (click to play)

• Module 1: Microwave Office Overview

- [Part 1 \(Environment UI\)](#)
- [Part 2 \(Environment UI continued\)](#)
- [Part 3 \(Hotkeys\)](#)
- [Part 4 \(Drawing\)](#)
- [Part 5 \(EM Extract\)](#)

• Module 2: Harmonic Balance

- [Part 1 \(HB Basics\)](#)
- [Part 2 \(Measurements\)](#)
- [Part 3 \(2 Tone Example\)](#)
- [Part 4 \(Sweeps/Power\)](#)
- [Part 5 \(Mixer Example\)](#)

A limited set of training content focused on getting started is available here: [Getting Started with AWR Software Playlists](#)

Learn by Topic

Design Insights

Product Insights

Videos

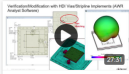
Latest Blogs

View All

Contact Us

GETTING STARTED WITH AWR SOFTWARE PLAYLISTS


This getting started video series is intended for you to get an easy start with your AWR software evaluation. Select a playlist below.



Software UI Overview And Set-Up

This playlist helps you to set-up the software and explains the user interface.

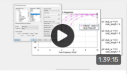
Watch Video



Schematics And Graphs

This section shows how to create your first design and successfully simulate it in Microwave Office.


Watch Video



Tuning, Layout, And EM Basics

This section shows how to tune, optimize and work with layout as well as EM simulation basics.

Watch Video

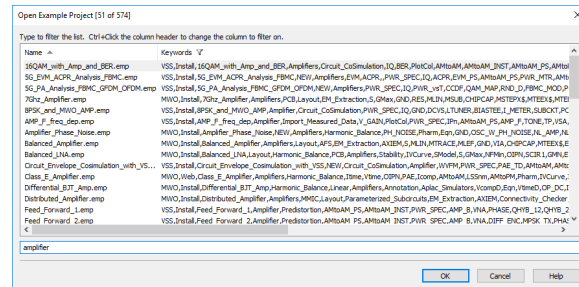


AWR E-Learning On-Demand Videos

Register Here

Examples - We Have Examples

The AWRDE has over 400 examples for you to use to use as a reference or as a starting point for your next design. From the software, select **Help > Open Example**. A dialog will open that allows you to type in keyword to trim down the list of examples. Search by design type (such as amplifier or mixer) or technology (MMIC or PCB).



This list also includes links to videos on how to use features in the software that are much easier to explain by watching a video rather than opening an example.

You can search the KB for examples from the example page or videos from the video page. Each example has one page giving you a preview of what is contained in that example and buttons to expedite opening that example.

