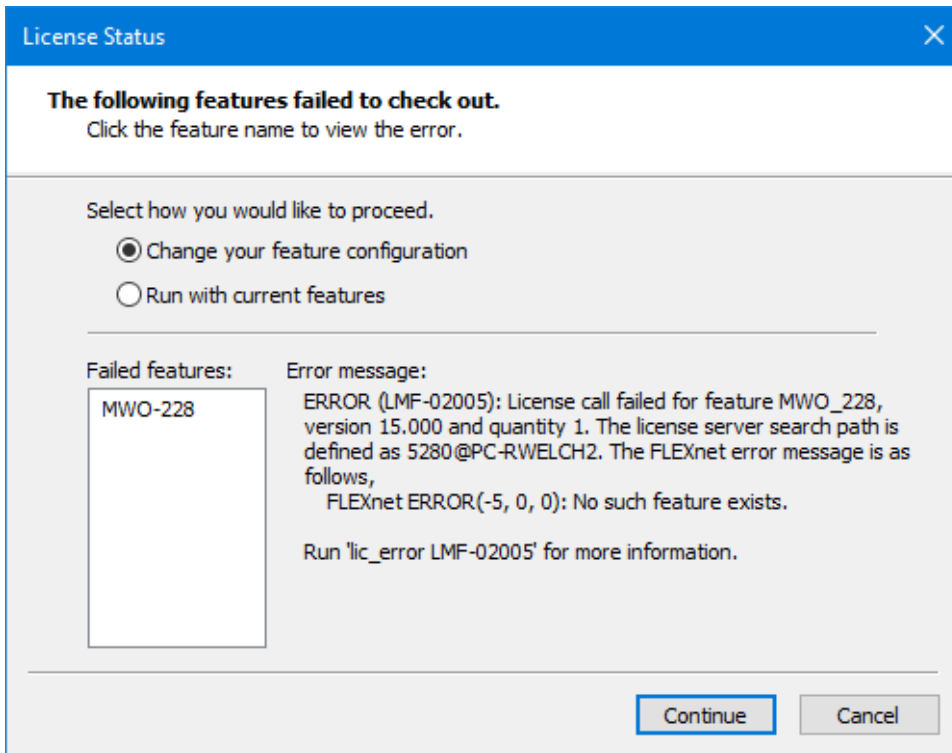


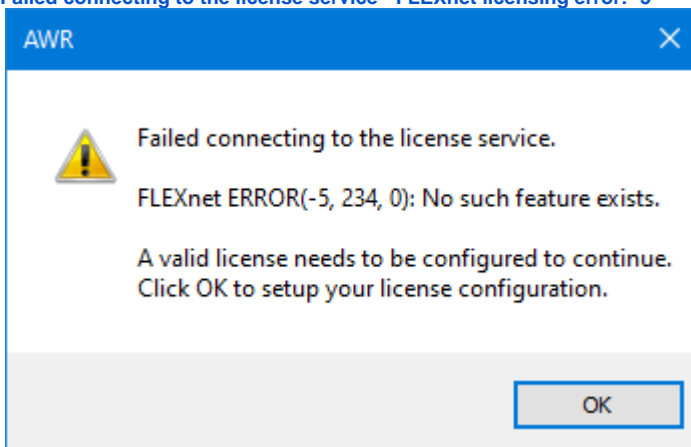
# Error message upon starting software floating license

Find the error you are seeing and click on the picture for more information.

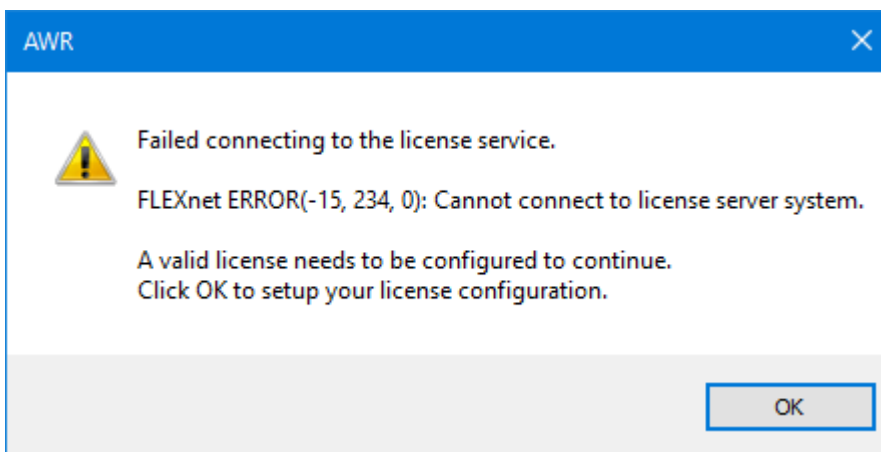
- **No such feature exists**



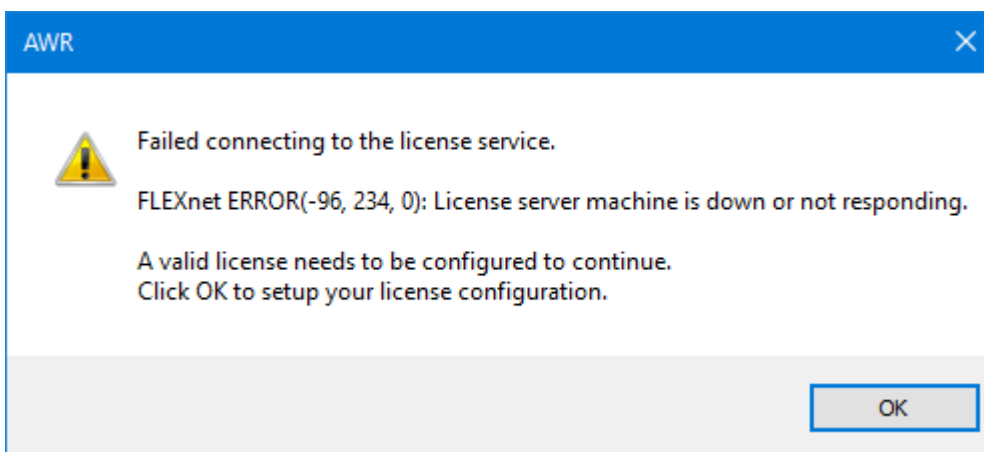
- **Failed connecting to the license service - FLEXnet licensing error: -5**



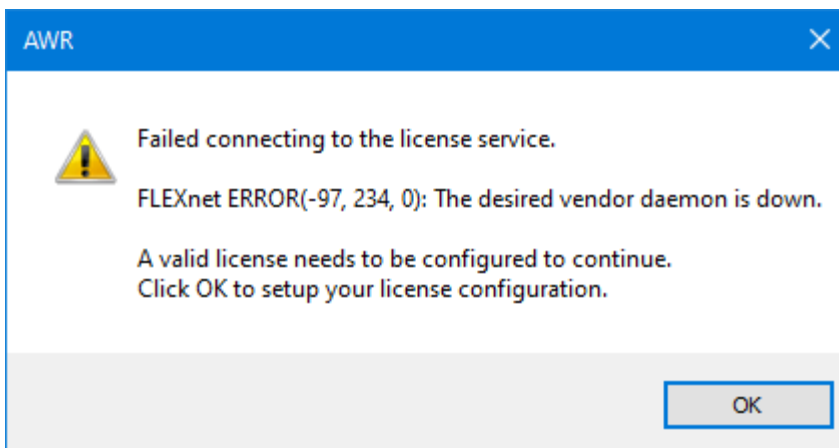
- **Failed connecting to the license service - FLEXnet licensing error: -15**



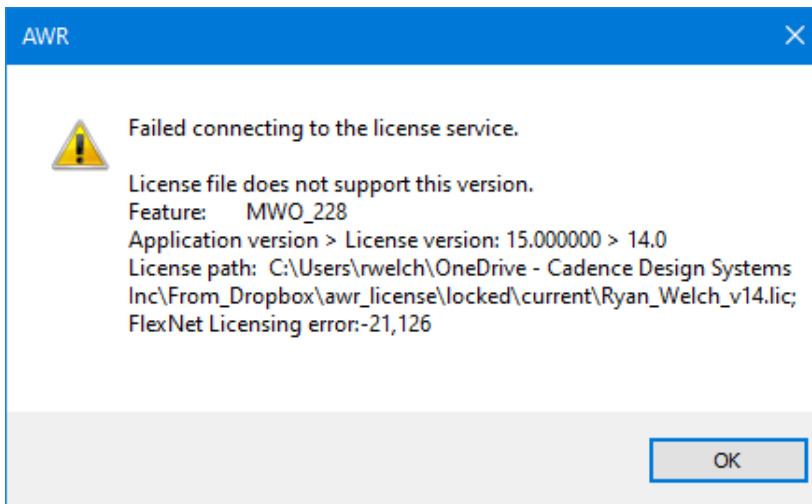
- Failed connecting to the license service - FLEXnet licensing error: -96



- Failed connecting to the license service - FLEXnet licensing error: -97



- License file does not support this version



- **Your system clock has been set back**