

Import VerilogA

This Script is available in V14 and later only

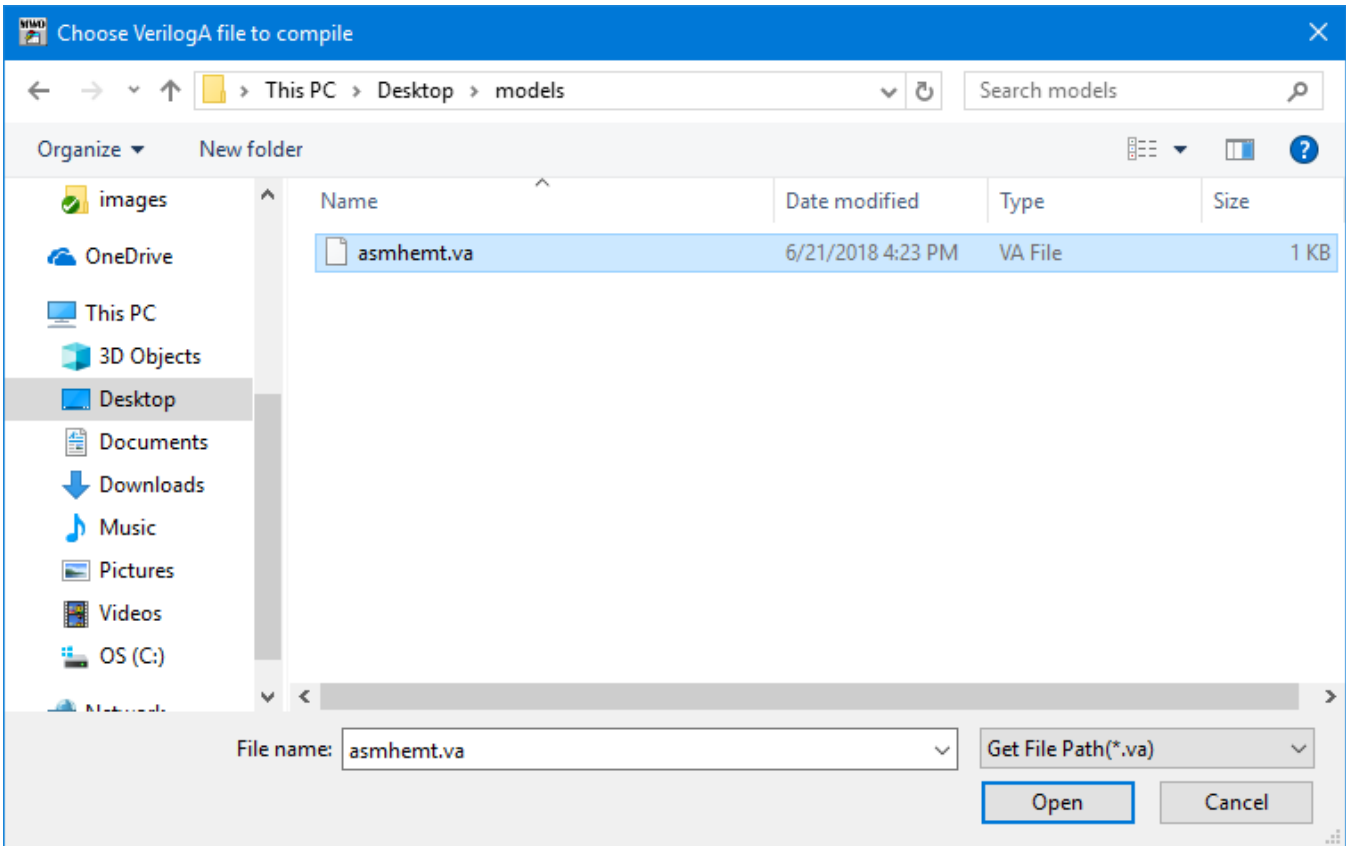
To run this script

Select **Scripts > Models > Import VerilogA** from the Menus.

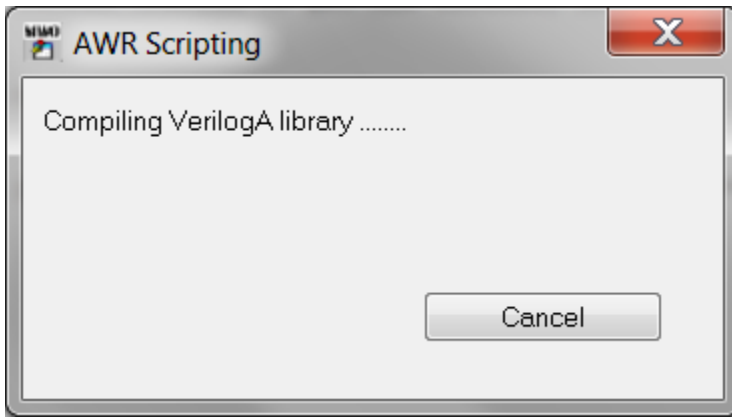
Or, in versions that support the script, you can run the utility directly from this page using this button.

Description

This script compiles a verilogA file in Aplac library and imports the library to the current project. **License feature SPT_100 is needed to run this utility.** Upon running the utility, the following dialog box displays asking you to choose a Verilog-A file.



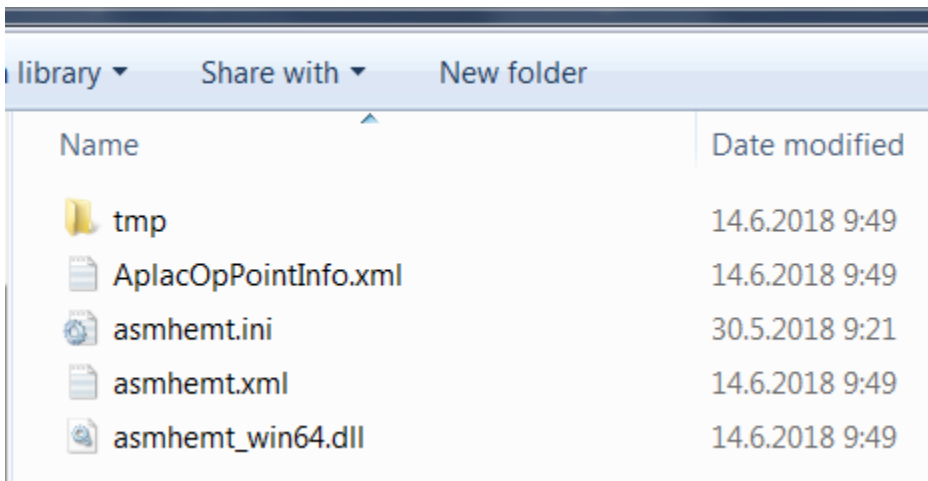
Compiling the file may take a while, from a few seconds to several minutes depending on the size of the verilog-A file. This dialog disappears after the compilation is done. User can cancel the compilation.



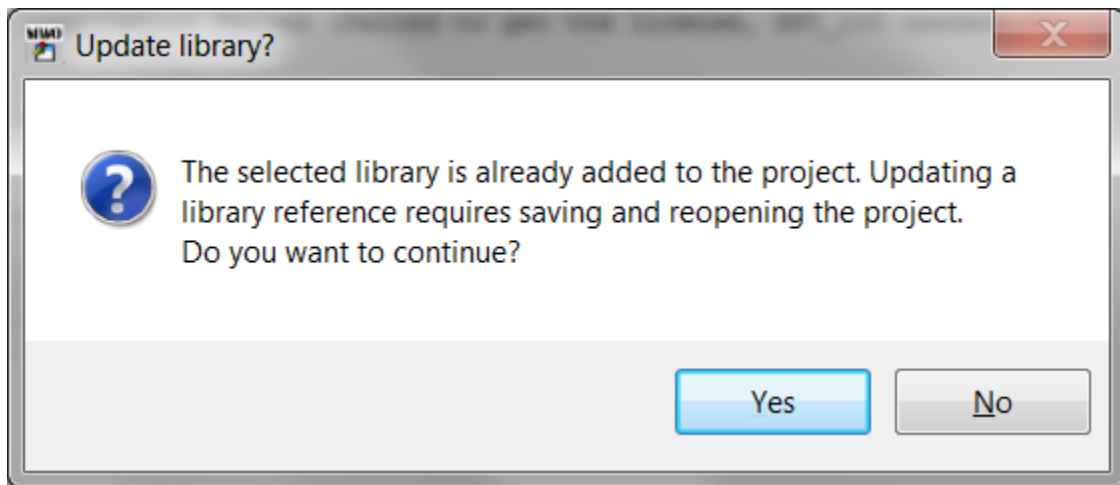
The newly created library is added to the project and the elements appear in the element tree

Models	Description
<input type="checkbox"/> VA:as...	VA:asmhemt
<input type="checkbox"/> VA:as...	VA:asmhemt_n5
<input type="checkbox"/> VA:as...	VA:asmhemt data block

A new folder is created for the library files.



If the library is already added to the project, it will be recompiled and all the elements are replaced with the newer version. Updating a library reference requires saving and reopening the project.



The selected library is already added to the project. Updating a library reference requires saving and reopening the project. Do you want to continue?

Yes

No