

# Show EM Stackup

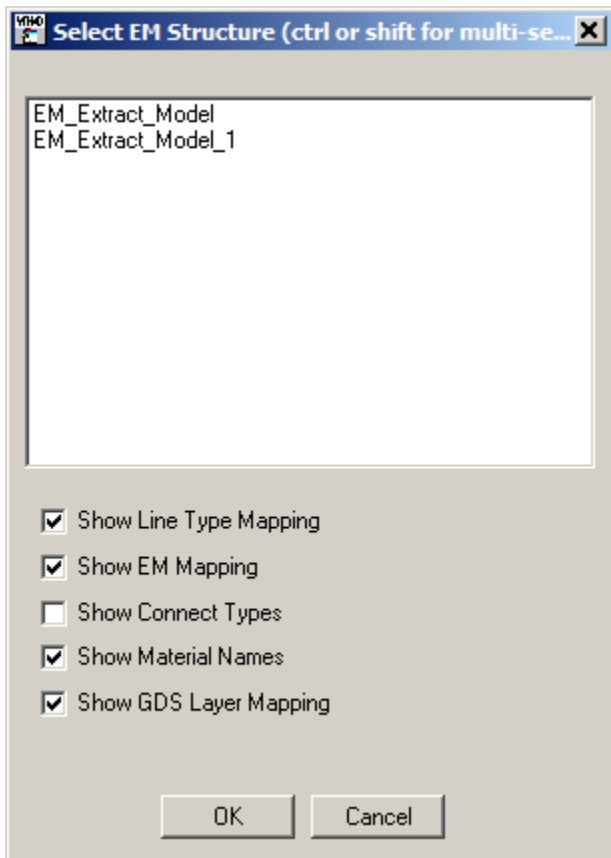
## To run this script

Select **Scripts > EM > Show\_EM\_Stackup** from the Menus.

Or, in versions that support the script, you can run the utility directly from this page using this button.

## Description

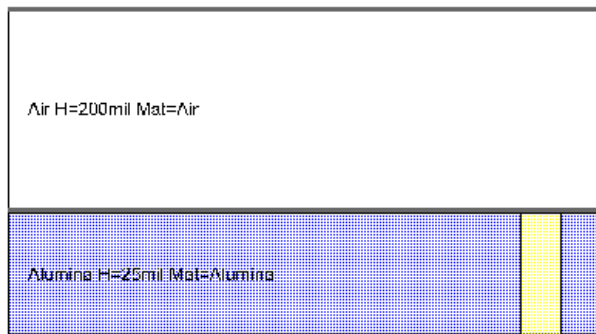
This utility draws a visual representation of the STACKUP In an EM Structure. A dialog will display asking for the user to select the EM structure in the project and various options for how the data should be displayed.



You can hold down shift or ctrl and click to select more than one structure.

Then a new schematic layout is created that shows a picture of the full EM stackup information. The new schematic name will be the name of the EM document with "\_Stack\_Info" appended to the end.

## Showing EM\_Extract\_Doc Line Type and EM Mapping



Top - Perfect Conductor

EM: Copper(GDS: 1) T=1.4mil Mat=ct , LT: Top Copper T=1.4mil Mat=ct

EM: Via(GDS: 2) T=1.4mil Mat=Perfect Conductor

Bottom - Perfect Conductor

*Bold and Italics means that metal layer exceeds height of dielectric layer into which it grows*