

# Clean Project - Delete Unwanted Project Tree Items

## To run this script

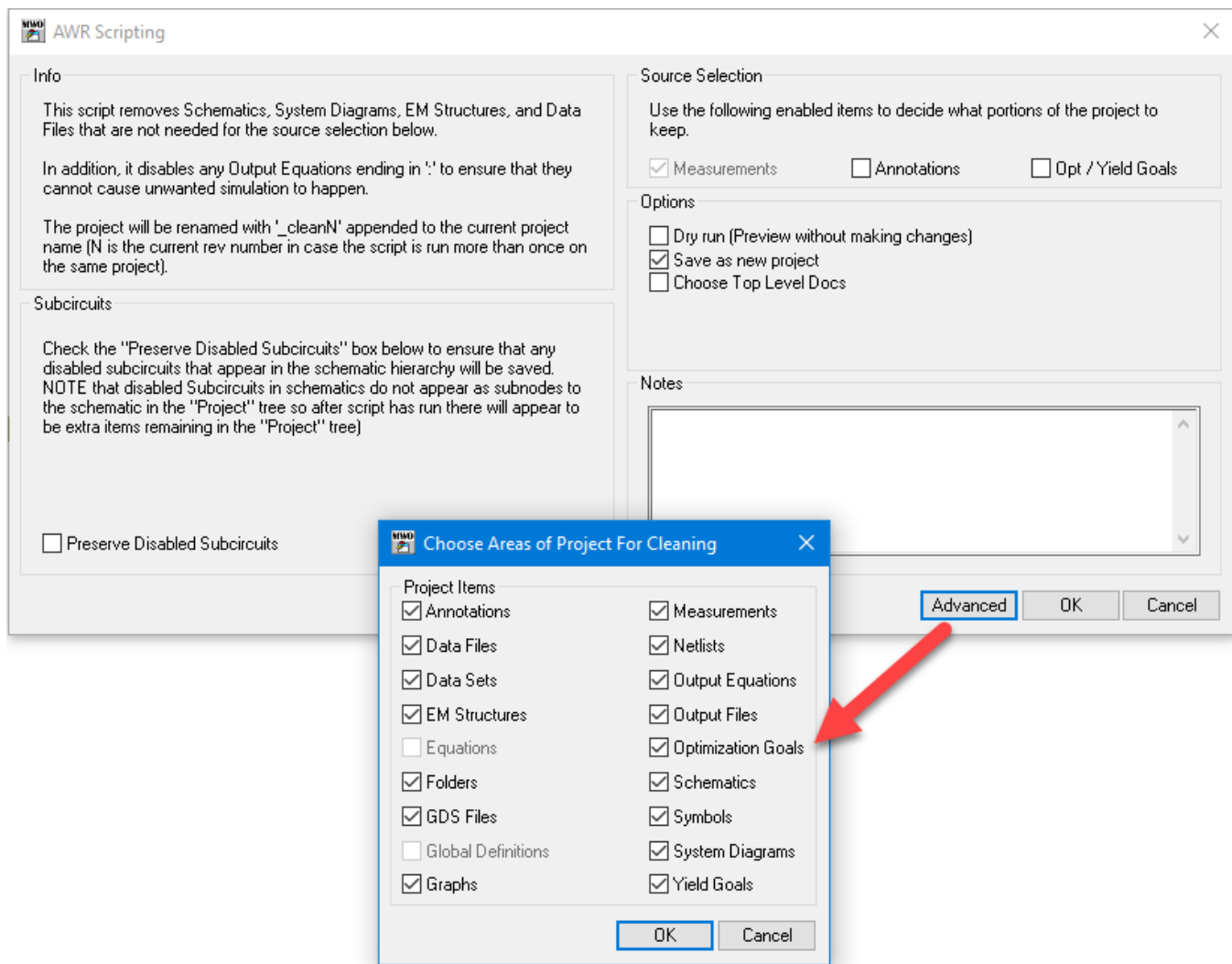
Select **Scripts > Project > Clean\_Project** from the Menus.

Or, in versions that support the script, you can run the utility directly from this page using this button.

## Description

This script cleans up a project by deleting any Graphs, Measurements, Schematics, System Diagrams, Data Files, Netlists, and EM Structures not needed for the current active (not disabled) measurements in the project. This script is commonly used before sending a project to a colleague or to AWR support as an easy way to cut down a complicated project to a much simpler one.

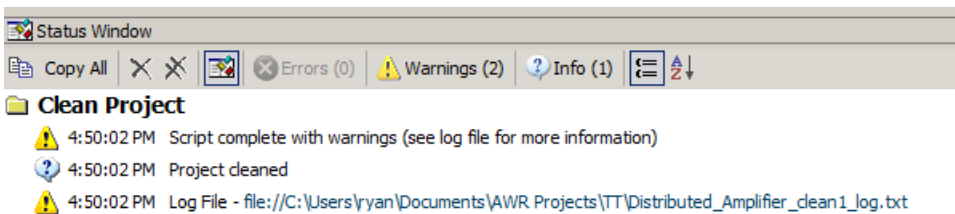
When the script is run, the dialog below will be displayed.



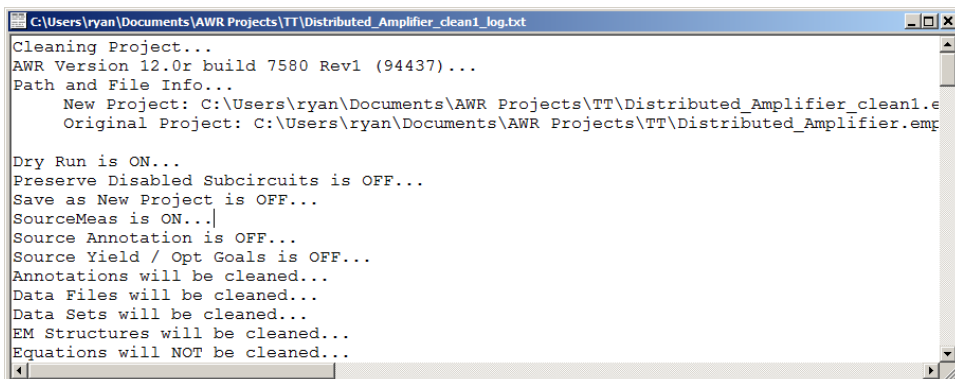
The script has the following features:

- If your project is not saved before running the script, you will be prompted to save before continuing.
- The **Preserve Disabled Subcircuits** option is well described on the dialog.
- The **Source Selection** area are where you choose which types of measurements are used to determine what to keep in the project. Measurements are always used so that option cannot be changed. Annotations and Optimization and Yield Goals also cause simulation to happen. With these options off, if one of these exists for a document and no other measurement is made to that document, it will be removed.

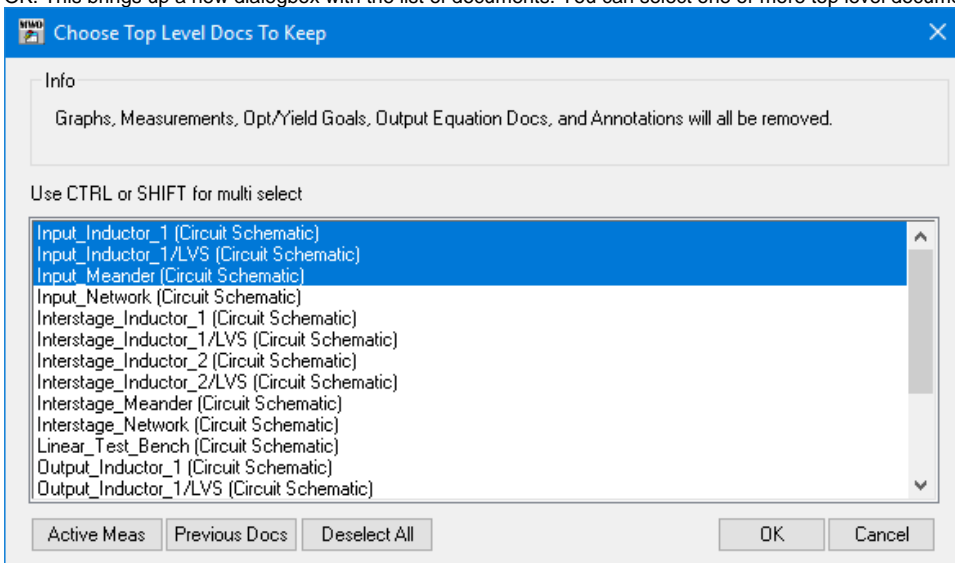
- The Notes text box allows you to add some details as to why you cleaning the project. Any text in this field will then be added to the log file named "Clean\_Log" that is loaded into the project when done.
- The Advanced button opens a 2nd dialog as shown in the picture above. This allow more control of items to skip removing when the script is run.
- The **Dry Run** option will analyze the design and print to the log what would have been deleted if this option was not checked. The Status Window will display a link to click to view the log. For example, after running the script, you will see this link.



Clicking the link would open a log similar to the one shown below.



- The **Save as new project** option will save with new name when not doing a dry run. We highly recommend you do not turn off this option as you could lose other parts of your design.
- The **Choose Top Level Docs** options allows you to clean the project by selecting one or more top level documents. Choose this option and click OK. This brings up a new dialogbox with the list of documents. You can select one or more top level documents.



- **Active Meas** button will select the top level documents that have a measurement enabled.
- **Previous Docs** button will select the documents selected in the last run in the project