

# Convert Measurements to Aplac Measurements

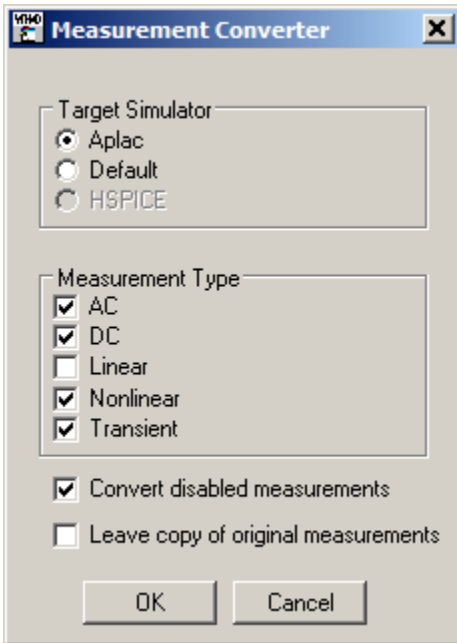
## To run this script

Select **Scripts > Simulation > Convert\_Meas\_To\_Aplac** from the Menus.

Or, in versions that support the script, you can run the utility directly from this page using this button.

## Description

This utility will switch all the simulation output in a project to use the Aplac simulators (or other simulators available). The intention of this utility was to help users switch current projects to use the Aplac simulators since they are the premier simulators in the AWR design environment. Once the user runs the utility, the following dialogue appears to ask for what kind of measurements the user wants to switch:



The settings are as follows:

- Target Simulator: Measurements will be switched to this simulator.
- Measurement Type: Select the type of simulations to convert. Linear is disabled by default since these are usually similar in speed as the default linear simulator.
- Convert disabled measurements: Even if the measurement is disabled, it will be converted to the target simulator.
- Leave copy of original measurements: This option will make a copy of the original measurement set to the target simulator instead of changing the current measurements. This allows you to compare both simulators.