

Print All Parameters of the Element to a Text File

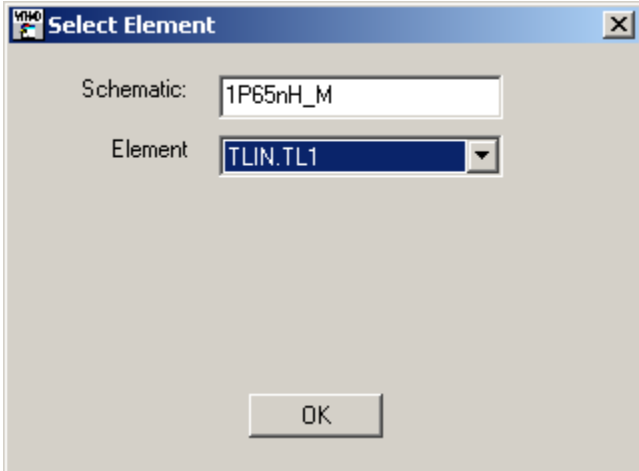
To run this script

Select **Scripts > Models > Parameter_Printer** from the Menus.

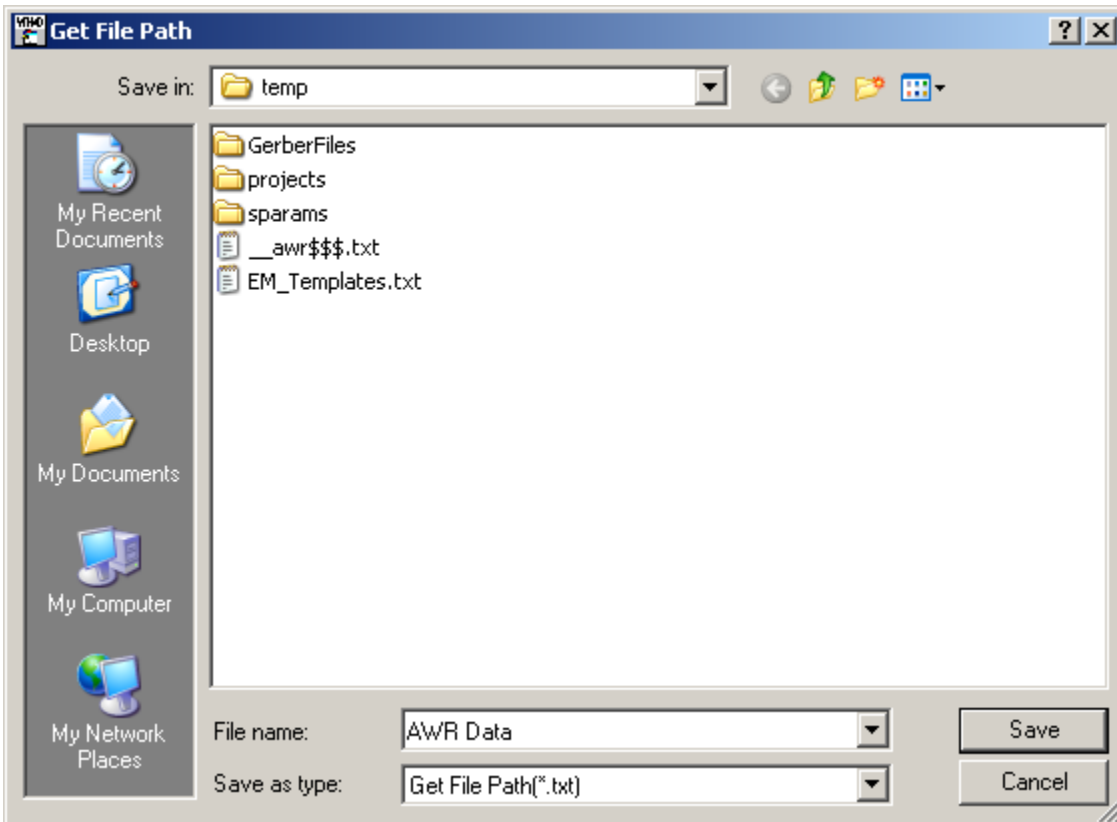
Or, in versions that support the script, you can run the utility directly from this page using this button.

Description

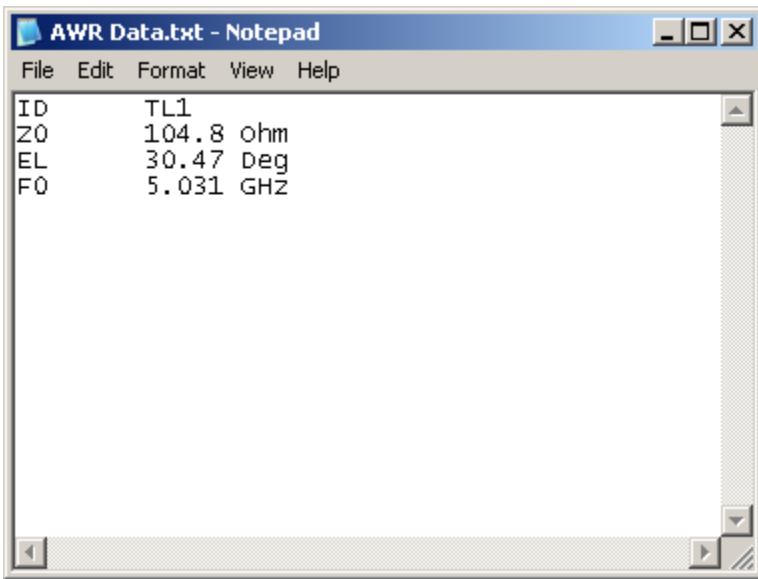
This script prints all parameters of the element chosen to a text file. It will ask the user to pick the schematic and the element.



The user is then prompted to select a file location.



All of the model parameters are then written to that file.



A screenshot of a Notepad window titled "AWR Data.txt - Notepad". The window has a menu bar with "File", "Edit", "Format", "View", and "Help". The text content is as follows:

ID	TL1
Z0	104.8 ohm
EL	30.47 Deg
F0	5.031 GHZ