

# Search Status Window

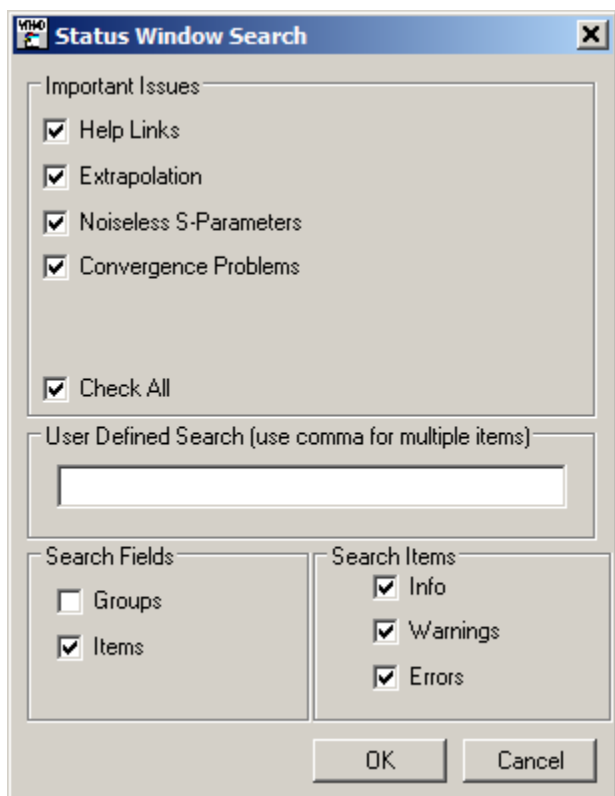
## To run this script

Select **Scripts > Project > Search\_Status\_Window** from the Menus.

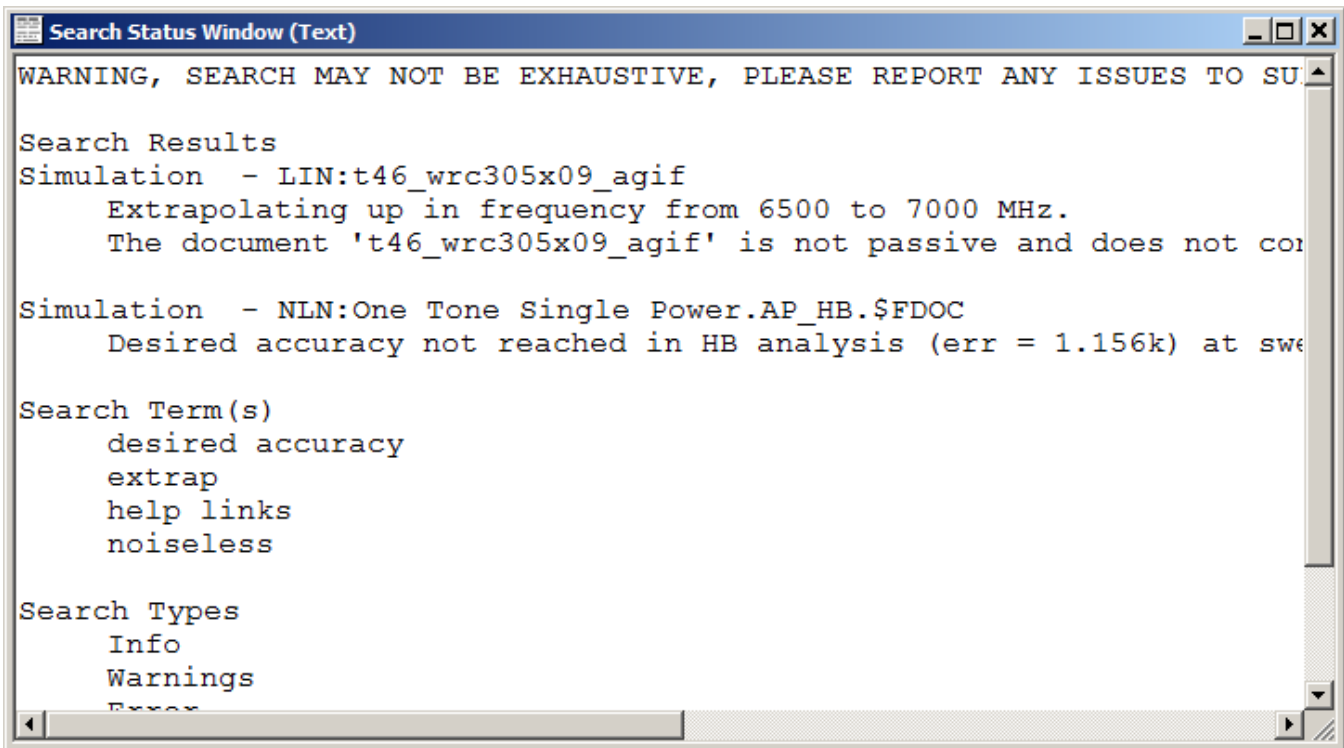
Or, in versions that support the script, you can run the utility directly from this page using this button.

## Description

Many times there are many messages in the Status Window after a simulation is complete. This script can search through these messages for specific items. When the script is run, this dialog will open.



There are several common warning message to search for in the Important Issues section. Configure the search and click the OK button. Your search results will be displayed in a text file in the AWR Design Environment, a sample is shown below.



From the status window, there are various components that can be searched including:

- Search Fields: From the figure below, the groups are the text at the top level with the folder icon next to them, for example, you could search for "Simulation". The items are the text below the groups, such as "Begin Simulate".
- Search Items: These are the types of messages, information, errors, or warnings.

