

Find Extracted EMDoc and Schematic

To run this script

Select **Scripts > EM > Find_Extracted_EMDoc_and_Schematic** from the Menus.

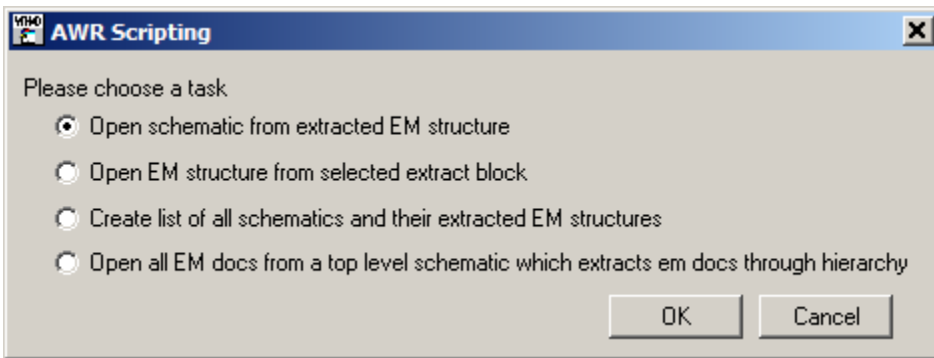
Or, in versions that support the script, you can run the utility directly from this page using this button.

Description

This script helps users working in large projects identify related documents between schematics and em documents when using extraction including:

1. Open the schematic that create an extracted EM Structure.
2. Open the EM structure from the selected extract block.
3. Create list of all schematics and their extracted EM structures.
4. Open all EM docs from a top level schematic which extracts EM documents through hierarchy.

Script has the following options to choose from:



Open schematic from extracted EM Structure option

When user makes an EM Structure window active and selects this option then script pops up the schematic window that created opened EM structure.

Open EM structure from selected extract block

When user selects the EXTRACT block on the schematic and selects this option then the script pops up the extracted EM structure.

Create list of all schematics and their extracted EM structures

When user selects this option the script creates and pops up list of all schematics and their extracted EM structures. This list also appears as EXTRACT information_API data file under the Data Files node at the project tree.

Open all EM docs from a top level schematic which extracts EM docs through hierarchy

When user selects this option the script opens all EM documents from a top level schematic which extracts EM Documents through hierarchy.